

190

Mighty To Save

Hillsong

♩ = 73

Intro: Drum Groove

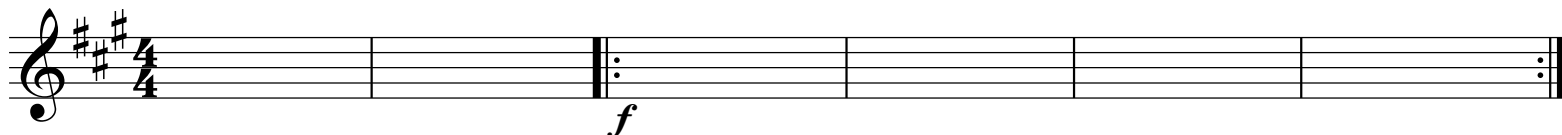
Band In (Bass 16th's) - Ele Gtr Line

D

A

F#m

E



A

Verse

Everyone needs compassion

Bass & Rhythm Ele Out

D

A

F#m

E

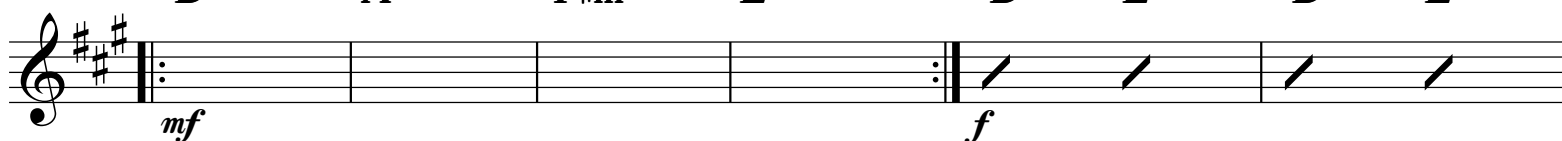
Full Band In

D

E

D

E



B

Chorus - Breakdown: Band Hold 1 and fade 4 bars - Ac Gtr & Pads Take Changes

Saviour, He can move

Drum Fill 2x

A

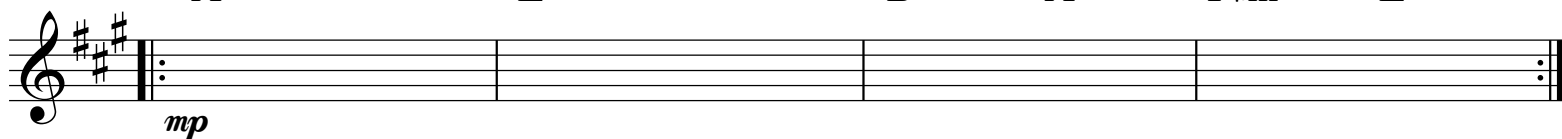
E

D

A

F#m

E



C

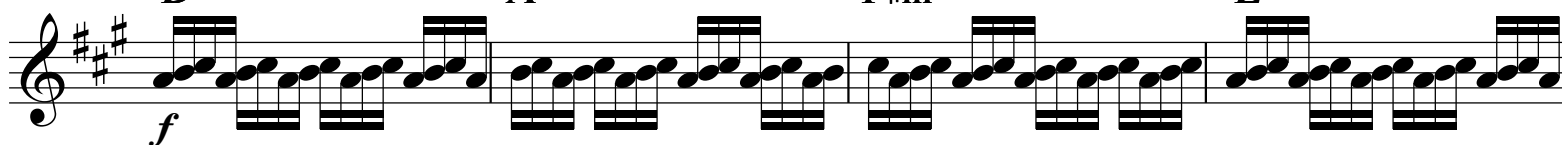
Interlude: Band In (Bass 16th's) - Ele Gtr Line

D

A

F#m

E



D

Verse

So take me

D

A

F#m

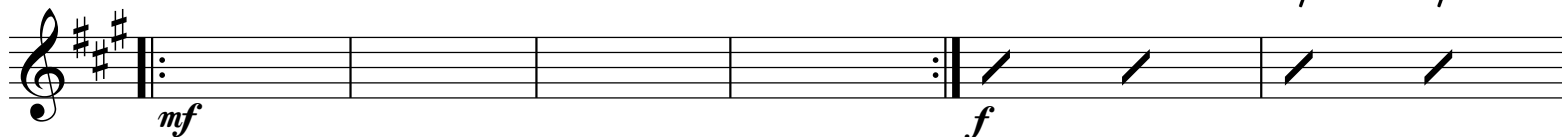
E

D

E

D/F#

E/G#



E

Chorus - Double: Full Groove

Saviour, He can move

Repeat 4x

A

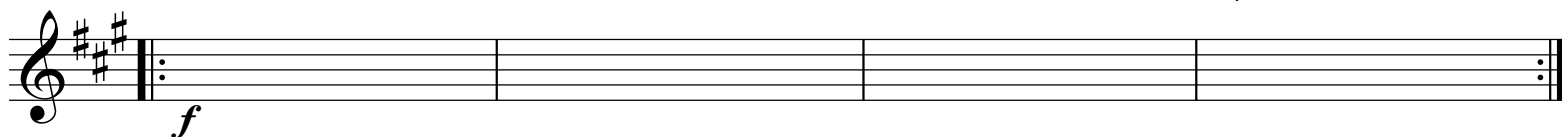
E

D

A

F#m

E



F Interlude: Ele Gtr Solo

D A E F#m D A E F#m

f

G Bridge

Shine Your Light

D A E F#m D A E F#m E

1. 2.

f

H Chorus:

1x Band Hold 1 and fade 4 bars - Ac Gtr & Pads Take Changes - Kick 2 & 4
Saviour, He can move 2x Band Build - Ele Gtr Line (No Bass)

A E D A F#m E F#m E

1. 2. Add Bass

mp - mf

I Chorus: Full Groove

Saviour, He can move

A E D A F#m E

f

J Bridge:

1 & 2x - Full Groove
Shine Your Light 3x - Drum Breakdown
4x - Band Creep In

D A E F#m D A E F#m E F#m

1-3 4. Band Big Build

f - f - mp - mf

f

K Tag: Full Groove

Shine Your Light

D A E F#m D A E F#m E

1. 2.

f

(2x) rit.